



INTESTINAL MICROBIOTA

4th Summer School

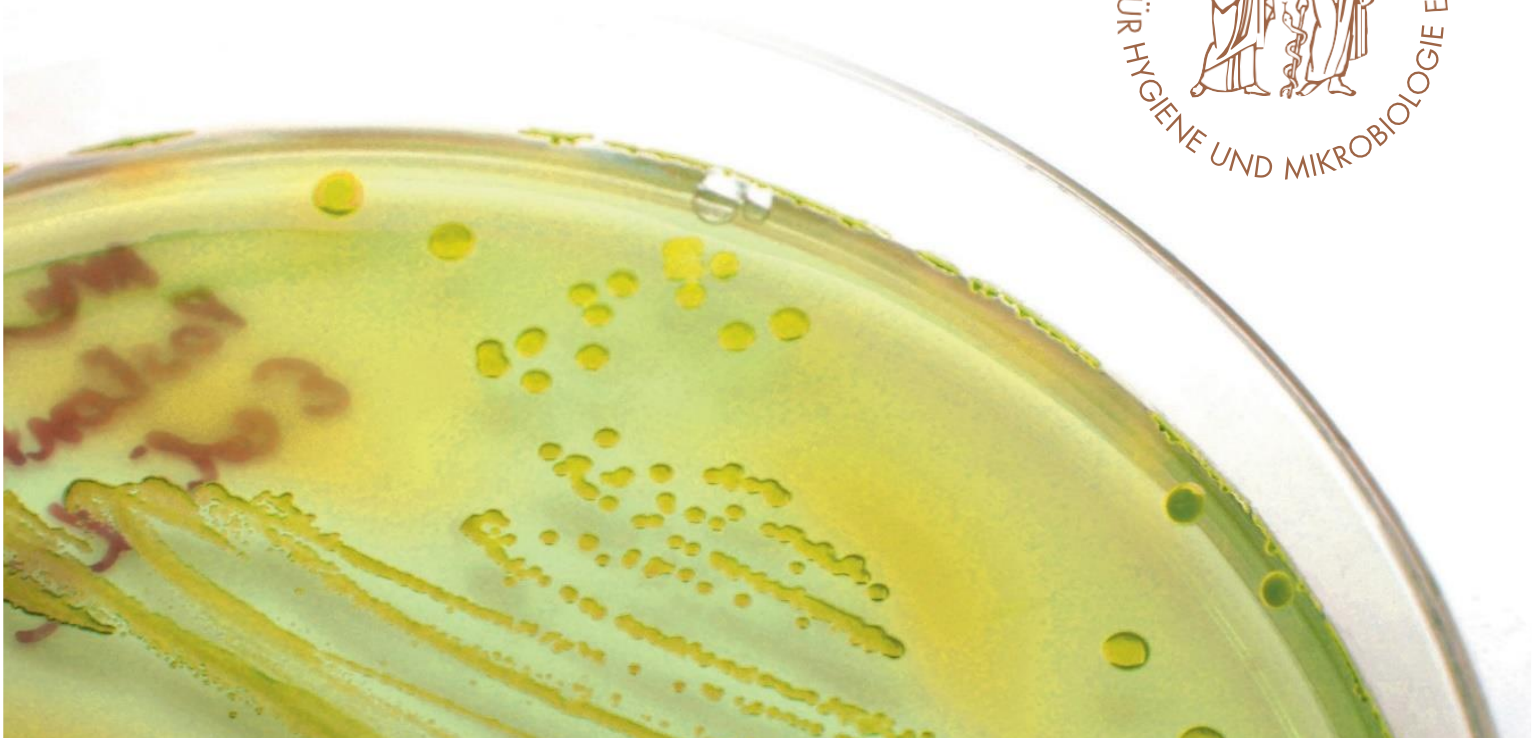
on Microbiome in Health and Disease –
from populations to models

June 29th – 30th, 2022

Conference Center Monastery Seeon

PROGRAM

For more information: www.DGHM.org/seeon



PRE-RECORDED LECTURES AS BACKGROUND INFORMATION:

- Thomas Clavel** Basics in gut microbiome research
- John Baines** Evolutionary perspectives on the human gut microbiome
- Nicola Segata/Francesco Asnicar** In-depth and large scale metagenomic profiling of the human microbiome
- Bärbel Stecher** Microbial interactions & synthetic communities
- Mathias Hornef** Ontogeny of the enteric microbe-host interaction - postnatal establishment of the enteric microbiota
- Dirk Haller** From observational population-based studies to causation
- Till Strowig** Imprinting of immune responses by gut microbes: on the verge of inflammation

ACCESS-LINK WILL BE PROVIDED VIA EMAIL

PROGRAM Wednesday, June 29th

13⁰⁰ – 14³⁰ Registration
14³⁰ – 14⁴⁵ Welcome: Thomas Clavel, RWTH Aachen, Germany

SESSION 1- LET'S GET TO KNOW EACH OTHER

14⁴⁵ – 15³⁰ Short Pitch by the lecturers
15³⁰ – 16⁰⁰ Audience landscape

SESSION 2- HOT TOPICS (I)

16⁰⁰ – 16¹⁵ Metagenomics (Francesco Asnicar, University of Trento, Povo, Italy)
16¹⁵ – 16³⁰ Microbial Ecology & Evolution (John Baines, Kiel University / MPI for Evolutionary Biology, Plön, Germany)

16³⁰ – 17⁰⁰ Coffee Break

SESSION 2- HOT TOPICS (I); CONTINUED

17⁰⁰ – 17¹⁵ Human Cohort Studies (Dirk Haller, TU Munich, Germany)
17¹⁵ – 17³⁰ Ontogeny of microbe-host interactions (Mathias Hornef, RWTH Aachen, Germany)
17³⁰ – 18⁰⁰ Discussion

KEY NOTE LECTURE

YIN AND YANG OF HUMAN VIROME AND ITS IMPACT ON THE FUNCTION OF BACTERIOME

18⁰⁰ – 18⁴⁵ Li Deng, Helmholtz Centre Munich / Technical University Munich, Germany

19⁰⁰ – 20³⁰ Dinner

MEET THE EXPERTS

20³⁰ – open end Round Table Discussion with the investigators

PROGRAM Thursday, June 30th

KEY NOTE LECTURE

Exploring microbiome interactions during the early life developmental window

09⁰⁰ – 09⁴⁵ Lindsay Hall, Technical University Munich, Germany

SESSION 3- HOT TOPICS (II)

09⁴⁵ – 10⁰⁰ Microbiomes via cultivation (Thomas Clavel, RWTH Aachen, Germany)

10⁰⁰ – 10¹⁵ Minimal Microbial Consortia (Bärbel Stecher-Letsch, Max von Pettenkofer Institute / LMU Munich, Germany)

10¹⁵ – 10⁴⁵ Coffee Break

SESSION 3- HOT TOPICS (II); CONTINUED

10⁴⁵ – 11⁰⁰ Microbe-host interactions in health and disease (Till Strowig, Helmholtz Centre for Infection Research, Braunschweig, Germany)

11⁰⁰ – 11¹⁵ Clinical Microbiome Research (Maria Vehreschild, Universitätsklinikum Frankfurt, Germany)

11¹⁵ – 11⁴⁵ Discussion

KEY NOTE LECTURE

MICROBIOTA AND INFECTIOUS DISEASES

11⁴⁵ – 12³⁰ Etienne Ruppé, Université de Paris / Hôpital Bichat-Claude Bernard, France

12³⁰ – 12⁴⁵ Conclusion & Farewell

12⁴⁵ – 14⁰⁰ Lunch

14⁰⁰ Departure / Start of the 14th Seeon Conference

Guest Speaker

Prof. John Baines

Kiel University / MPI for Evolutionary
Biology
Section of Evolutionary Medicine
August-Thienemann-Str. 2
D-24306 Plön
baines@evolbio.mpg.de

Prof.^{IN} Li Deng

Institute of Virology
Helmholtz Centre Munich and Technical
University of Munich
Ingolstaedter Landstr. 1
D-85764 Neuherberg, Germany
li.deng@helmholtz-muenchen.de

Prof. Dirk Haller

Technical University Munich
Ernährung und Immunologie
Gregor-Mendel-Str. 2
D-85354 Freising
dirk.haller@tum.de

Dr. Francesco Asnicar

CIBIO - University of Trento
Comput. Metagenomics Lab
Via Sommarive 9
I-38123 Povo (Trento), Italy
f.asnicar@unitn.it

Prof. Till Strowig

Helmholtz-Zentrum für
Infektionsforschung GmbH
Mikrobielle Immunregulation
Inhoffenstraße 7
D-38124 Braunschweig
till.strowig@helmholtz-hzi.de

Prof.^{IN} Maria J.G.T. Vehreschild

Universitätsklinikum Frankfurt
Medizinische Klinik II /
Schwerpunkt Infektiologie
Theodor-Stern-Kai 7
D-60590 Frankfurt am Main
Maria.Vehreschild@kgu.de

Prof. Thomas Clavel

RWTH University
Functional Microbiome Research Group
Pauwelsstraße 30
D-52074 Aachen
tclavel@ukaachen.de

Prof.^{IN} Lindsay Hall

Technical University Munich
Chair of Intestinal Microbiome
Weihenstephaner Berg 3
D-85354 Freising
lindsay.hall@tum.de

Prof. Mathias Hornef

RWTH University
Med. Microbiology
Pauwelsstr. 30
D-52074 Aachen
mhornef@ukaachen.de

Prof.^{IN} Bärbel Stecher-Letsch

LMU Munich
Max von Pettenkofer Institute –
Mikrobiota und Infektionen
Pettenkoferstrasse 9a
D-80336 Weilheim
stecher@mvp.uni-muenchen.de

Prof. Etienne Ruppé

PU-PH/Professor of Bacteriology
IAME, UMR 1137, EVRest team
Université de Paris/APHP Paris Nord
Laboratoire de Bactériologie, Hôpital
Bichat-Claude Bernard
46 rue Henri Huchard,
F-75877 PARIS Cedex 18
etienne.ruppe@aphp.fr